

## Industrial multipole connectors

# revos POWER

### Technical Data

#### ■ Approvals

UL, CSA, SEV, MEEI

#### ■ Applicable standards

IEC 61 984

#### ■ Contact inserts

No. of poles	6 + Earth	/ 6 + Earth	/ 4 + Earth
Rated current	35 A	/ 35 A	/ 82 A
Rated voltage	400 V	/ 690 V	/ 690/400 V
Screw connection	2.5 – 6 mm <sup>2</sup>	/ 2.5 – 6 mm <sup>2</sup>	/ 6 – 16 mm <sup>2</sup>
	14 – 8 AWG	/ 14 – 8 AWG	/ 10 – 4 AWG

No. of poles	4/6 + Earth	/ 6/6 + Earth
Rated current	35/16 A	/ 40/16 A
Rated voltage	690 V	/ 690/400 V + 400/230 V
Screw connection	4 x 2.5 – 6 mm <sup>2</sup>	/ 6 x 4 – 10 mm <sup>2</sup>
	4 x 14 – 8 AWG	/ 6 x 12 – 6 AWG
	6 x 1 – 2.5 mm <sup>2</sup>	/ 6 x 1 – 2.5 mm <sup>2</sup>
	6 x 16 – 12 AWG	/ 6 x 16 – 12 AWG

No. of poles	3/3/6 + Earth	/ 4/2 + Earth
Rated current	100/40/16 A	/ 82/16 A (70/16 A CSA)
Rated voltage	690/400 V	/ 690 V
	690/400 V	/ 400 V
	400/230 V	

Screw connection	3 x 10 – 25 mm <sup>2</sup>	/ 4 x 6 – 16 mm <sup>2</sup>
	3 x 8 – 2 AWG	/ 4 x 10 – 4 AWG
	3 x 4 – 10 mm <sup>2</sup>	/ 2 x 1 – 2.5 mm <sup>2</sup>
	3 x 12 – 6 AWG	/ 2 x 16 – 12 AWG
	6 x 1 – 2.5 mm <sup>2</sup>	
	6 x 16 – 12 AWG	

Nominal voltage according to UL	600 V
Nominal voltage according to CSA	600 V
Degree of pollution	3
Temperature range	–40 to +110 °C

#### ■ Terminal adaptors

No. of poles	6 + Earth	/ 6 + Earth	/ 4/6 + Earth
Rated current	35 A	/ 35 A	/ 35/16 A
Rated voltage	400 V	/ 690 V	/ 500 V
Screw connection	2.5 – 6.0 mm <sup>2</sup>	/ 2.5 – 6.0 mm <sup>2</sup>	/ 4 x 2.5 – 6.0 mm <sup>2</sup> / 6 x 1.5 – 4 mm <sup>2</sup>
	14 – 8 AWG	14 – 8 AWG	/ 4 x 14 – 8 AWG / 6x 16 – 12 AWG

Nominal voltage according to UL	600 V
Nominal voltage according to CSA	600 V
Degree of pollution	3
Temperature range	–40 to +110 °C

#### ■ Contacts

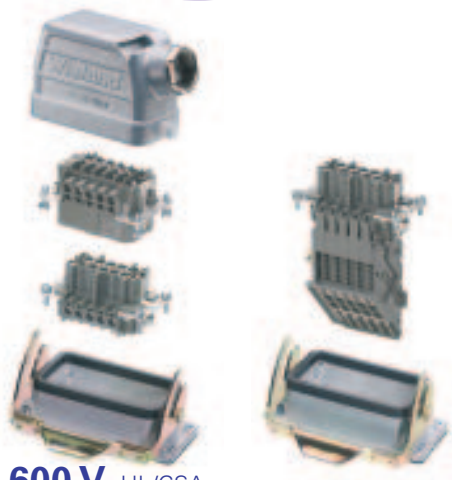
Material	Copper alloy
Surface	tin plated
Surface	silver plated

#### ■ Hoods and housings

Material	die cast aluminium alloy
Surface finish	silver grey, silicon free, powder coated
Locking levers	zinc plated steel
Gaskets	NBR
Temperature range	–40 to +110 °C
Degree of protection according to DIN EN 60 529	
with latched locking levers	IP 55
with appropriate glands	IP 65

# Industrial multipole connectors, plug and socket inserts, terminal adaptors, hoods and housings with single locking lever 6 pole 400 V

## revos POWER



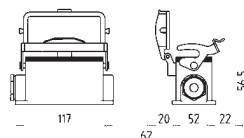
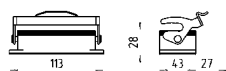
**600 V** UL/CSA

**400 V, 35 A** IEC 61 984

**IP 55 protection, IP 65 protection** with suitable cable gland

		Cross section	Approvals	Stripping length	Material	Box Qty
 <b>Screw connection</b>	Socket insert	2.5 – 6 mm <sup>2</sup> 14 – 8 AWG		10 mm	silver-plated	10
	Plug insert	2.5 – 6 mm <sup>2</sup> 14 – 8 AWG		10 mm	silver-plated	10
 <b>Screw connection</b> Terminal adaptors	Socket insert, earth right	2.5 – 6 mm <sup>2</sup> 14 – 8 AWG		12 mm	silver-plated	10
	Socket insert, earth left	2.5 – 6 mm <sup>2</sup> 14 – 8 AWG		12 mm	silver-plated	10
	Plug insert, earth right	2.5 – 6 mm <sup>2</sup> 14 – 8 AWG		12 mm	silver-plated	10
	Plug insert, earth left	2.5 – 6 mm <sup>2</sup> 14 – 8 AWG		12 mm	silver-plated	10
No. of poles	Thread	Cable gland type		Box Qty		
Hood Size <b>16</b> for multipole connectors <b>6 pole + earth</b>	M 25	0 with cable gland 1 with thread only 2 intermediate support with thread 3 with strain relief		1		
				Open housing	Closed housing with two cable glands on side	Closed housing with one cable gland on left side
						
No. of poles	Thread	Cable gland type	Box Qty	Part No.	Part No.	Part No.
Housings Size <b>16</b> for multipole connectors <b>6 pole + earth</b>	M 25	0 with cable gland	1	71.320.1628.0	71.330.1635.0 71.330.1635.1	71.331.1635.0 71.331.1635.1
		1 with thread only	1			

# revos



## 6 pole + earth

### Pole assignment

Plug insert      Socket insert  
6 pole + earth    6 pole + earth

### Dimensions for terminal adaptors

### Mounting distances and opening for open housings

Part No.  
70.200.0653.0

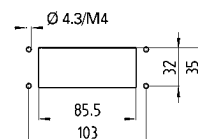
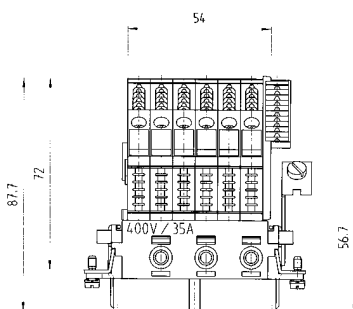
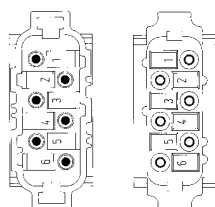
70.210.0653.0

70.005.0653.0

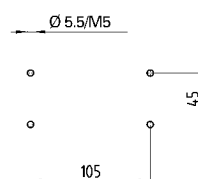
70.000.0653.0

70.015.0653.0

70.010.0653.0



### Mounting distances for closed housings



### Hood



### Hood



### Hood



Part No.  
71.350.1635.0  
71.350.1635.1  
71.350.1635.2  
71.350.1635.3

Part No.  
71.351.1635.0  
71.351.1635.1  
71.351.1635.2  
71.351.1635.3

Part No.  
71.352.1635.0  
71.352.1635.1  
71.352.1635.2  
71.352.1635.3

Closed housing with cable gland from underneath



Open housing with protective cover



Closed housing with two cable glands on side and protective cover



Closed housing with cable gland on left side and protective cover



Closed housing with cable gland on right side and protective cover



Closed housing with cable gland underneath and protective cover



Part No.  
71.333.1635.0  
71.333.1635.1

Part No.  
71.325.1628.0

Part No.  
71.340.1635.0  
71.340.1635.1

Part No.  
71.341.1635.0  
71.341.1635.1

Part No.  
71.342.1635.0  
71.342.1635.1

Part No.  
71.343.1635.0  
71.343.1635.1

# Industrial multipole connectors, plug and socket inserts, terminal adaptors, hoods and housings with double locking levers 6 pole 400 V

## revos POWER



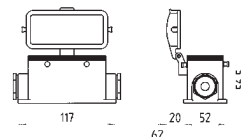
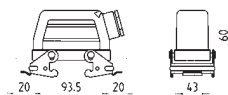
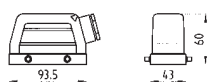
**600 V** UL/CSA

**400 V, 35 A** IEC 61 984

**IP 55 protection, IP 65 protection** with suitable cable gland

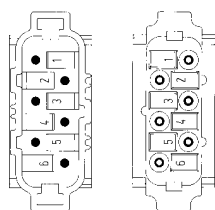
		Cross section	Approvals	Stripping length	Material	Box Qty
 <b>Screw connection</b>	Socket insert	2.5 – 6 mm <sup>2</sup> 14 – 8 AWG		10 mm	silver-plated	10
	Plug insert	2.5 – 6 mm <sup>2</sup> 14 – 8 AWG		10 mm	silver-plated	10
 <b>Screw connection</b> Terminal adaptors	Socket insert, earth right	2.5 – 6 mm <sup>2</sup> 14 – 8 AWG		12 mm	silver-plated	10
	Socket insert, earth left	2.5 – 6 mm <sup>2</sup> 14 – 8 AWG		12 mm	silver-plated	10
	Plug insert, earth right	2.5 – 6 mm <sup>2</sup> 14 – 8 AWG		12 mm	silver-plated	10
	Plug insert, earth left	2.5 – 6 mm <sup>2</sup> 14 – 8 AWG		12 mm	silver-plated	10
No. of poles	Thread	Cable gland type		Box Qty		
Hood Size <b>16</b> for multipole connectors <b>6 pole + earth</b>	M 25	0 with cable gland 1 with thread only 2 intermediate support with thread 3 with strain relief		1		
				Open housing	Closed housing with two cable glands on side	Closed housing with one cable gland on left side
						
No. of poles	Thread	Cable gland type	Box Qty	Part No.	Part No.	Part No.
Housings Size <b>16</b> for multipole connectors <b>6 pole + earth</b>	M 25	0 with cable gland	1	70.320.1628.0	70.330.1635.0	70.331.1635.0
		1 with thread only	1		70.330.1635.1	70.331.1635.1

# revos

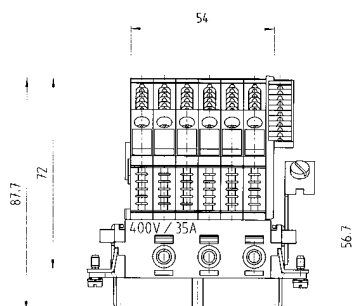


## 6 pole + earth

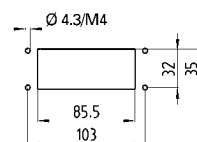
Pole assignment  
Plug insert      Socket insert  
6 pole + earth      6 pole + earth



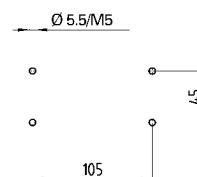
Dimensions for terminal adaptors



Mounting distances and opening for open housings



Mounting distances for closed housings



Part No.
70.200.0653.0
70.210.0653.0
70.005.0653.0
70.000.0653.0
70.015.0653.0
70.010.0653.0

Hood	Hood	Hood	Hood with locking levers	Hood with locking levers	Hood with locking levers
Part No.	Part No.	Part No.	Part No.	Part No.	Part No.
70.350.1635.0 70.350.1635.1 70.350.1635.2 70.350.1635.3	70.351.1635.0 70.351.1635.1 70.351.1635.2 70.351.1635.3	70.352.1635.0 70.352.1635.1 70.352.1635.2 70.352.1635.3	70.355.1635.0 70.355.1635.1 70.355.1635.2 70.355.1635.3	70.356.1635.0 70.356.1635.1 70.356.1635.2 70.356.1635.3	70.357.1635.0 70.357.1635.1 70.357.1635.2 70.357.1635.3
Closed housing with cable gland from underneath	Open housing with protective cover	Closed housing with two cable glands on side and protective cover	Closed housing with cable gland on left side and protective cover	Closed housing with cable gland on right side and protective cover	Closed housing with cable gland underneath and protective cover
Part No.	Part No.	Part No.	Part No.	Part No.	Part No.
70.333.1635.0 70.333.1635.1	70.325.1628.0	70.340.1635.0 70.340.1635.1	70.341.1635.0 70.341.1635.1	70.342.1635.0 70.342.1635.1	70.343.1635.0 70.343.1635.1



# Industrial multipole connectors, plug and socket inserts, terminal adaptors, hoods and housings with single locking levers 6 pole 690 V

## revos POWER



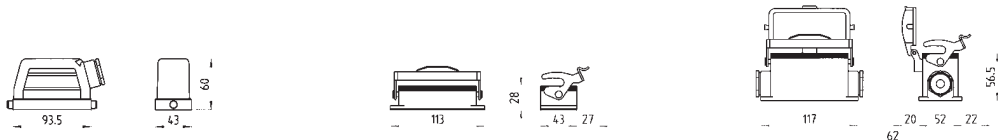
**600 V** UL/CSA

**690 V, 35 A** IEC 61 984

**IP 55 protection, IP 65 protection** with suitable cable gland

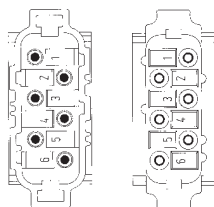
		Cross section	Approvals	Stripping length	Material	Box Qty
 <b>Screw connection</b>	Socket insert	2.5 – 6 mm <sup>2</sup> 14 – 8 AWG		10 mm	silver-plated	10
	Plug insert	2.5 – 6 mm <sup>2</sup> 14 – 8 AWG		10 mm	silver-plated	10
 <b>Screw connection</b> Terminal adaptors	Socket insert, earth right	2.5 – 6 mm <sup>2</sup> 14 – 8 AWG		12 mm	silver-plated	10
	Socket insert, earth left	2.5 – 6 mm <sup>2</sup> 14 – 8 AWG		12 mm	silver-plated	10
	Plug insert, earth right	2.5 – 6 mm <sup>2</sup> 14 – 8 AWG		12 mm	silver-plated	10
	Plug insert, earth left	2.5 – 6 mm <sup>2</sup> 14 – 8 AWG		12 mm	silver-plated	10
No. of poles	Thread	Cable gland type		Box Qty		
Hood Size <b>16</b> for multipole connector <b>6 pole + earth</b>	M 25	0 with cable gland 1 with thread only 2 intermediate support with thread 3 with strain relief		1		
		Open housing		Closed housing with two cable glands on side	Closed housing with one cable gland on left side	
						
No. of poles	Thread	Cable gland type	Box Qty	Part No.	Part No.	Part No.
Housings Size <b>16</b> multipole connectors <b>6 pole + earth</b>	M 25	0 with cable gland	1	71.320.1628.0	71.330.1635.0	71.331.1635.0
		1 with thread only	1			
					71.330.1635.1	71.331.1635.1

# revos

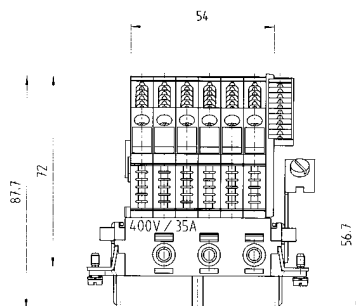


## 6 pole + earth

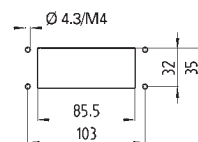
Pole assignment  
 Plug insert      Socket insert  
 6 pole + earth    6 pole + earth



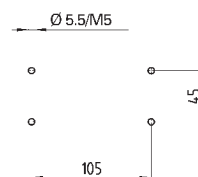
Dimensions of the terminal adaptors



Mounting distances and opening for open housings



Mounting distances for closed housings



Part No.
72.200.0653.0
72.210.0653.0
72.005.0653.0
72.000.0653.0
72.015.0653.0
72.010.0653.0

Hood with cable gland	Hood with cable gland	Hood with cable gland

Part No.	Part No.	Part No.			
71.350.1635.0 71.350.1635.1 71.350.1635.2 71.350.1635.3	71.351.1635.0 71.351.1635.1 71.351.1635.2 71.351.1635.3	71.352.1635.0 71.352.1635.1 71.352.1635.2 71.352.1635.3			
Closed housing with cable gland from underneath	Open housing with protective cover	Closed housing with two cable glands on side and protective cover	Closed housing with cable gland on left side and protective cover	Closed housing with cable gland on right side and protective cover	Closed housing with cable gland underneath and protective cover
Part No.	Part No.	Part No.	Part No.	Part No.	Part No.
71.333.1635.0 71.333.1635.1	71.325.1628.0	71.340.1635.0 71.340.1635.1	71.341.1635.0 71.341.1635.1	71.342.1635.0 71.342.1635.1	71.343.1635.0 71.343.1635.1

# Industrial multipole connectors, plug and socket inserts, terminal adaptors, hoods and housings with double locking levers 6 pole 690 V

## revos POWER



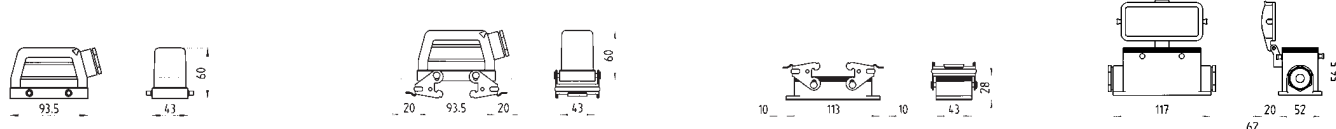
**600 V** UL/CSA  
**690 V, 35 A** IEC 61 984

IP 55 Protection, IP 65 Protection with the suitable cable gland

		Cross-section	Approvals	Stripping length	Material	Box Qty
 <b>Screw connection</b>	Socket insert	2.5 – 6 mm <sup>2</sup> 14 – 8 AWG		10 mm	silver-plated	10
	Plug insert	2.5 – 6 mm <sup>2</sup> 14 – 8 AWG		10 mm	silver-plated	10
 <b>Screw connection</b> Terminal adaptor	Socket insert, earth-right	2.5 – 6 mm <sup>2</sup> 14 – 8 AWG		12 mm	silver-plated	10
	Socket insert, earth-left	2.5 – 6 mm <sup>2</sup> 14 – 8 AWG		12 mm	silver-plated	10
	Plug insert, earth-right	2.5 – 6 mm <sup>2</sup> 14 – 8 AWG		12 mm	silver-plated	10
	Plug insert, earth-left	2.5 – 6 mm <sup>2</sup> 14 – 8 AWG		12 mm	silver-plated	10
Number of poles	Thread	Cable gland type	Box Qty			
Hoods Size <b>16</b> for multipole connectors <b>6 pole + earth</b>	M 25	0 with cable gland 1 with thread only 2 intermediate supports with thread 3 with strain relief	1			
			Open housing	Closed housing with two cable glands on side	Closed housing with one cable gland on left side	
						
Number of poles	Thread	Cable gland type	Box Qty	Part No.	Part No.	Part No.
Housings Size <b>16</b> multipole connectors <b>6 pole + earth</b>	M 25	0 with cable gland 1 with thread only	1 1	70.320.1628.0	70.330.1635.0 70.330.1635.1	70.331.1635.0 70.331.1635.1



# revos



## 6 pole + earth

Pole assignment  
 Plug insert    Socket insert  
 6 pole + earth    6 pole + earth

Dimensions of the terminal adaptors

Mounting distances and opening for open housings

Part No.  
 72.200.0653.0

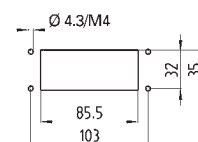
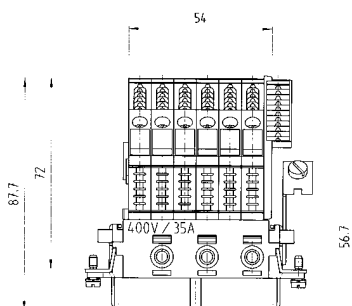
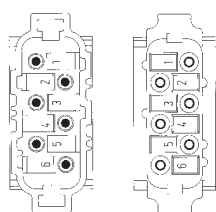
72.210.0653.0

72.005.0653.0

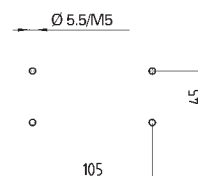
72.000.0653.0

72.015.0653.0

72.010.0653.0



Mounting distances for closed housings



Part No.  
 70.350.1635.0  
 70.350.1635.1  
 70.350.1635.2  
 70.350.1635.3

Part No.  
 70.351.1635.0  
 70.351.1635.1  
 70.351.1635.2  
 70.351.1635.3

Part No.  
 70.352.1635.0  
 70.352.1635.1  
 70.352.1635.2  
 70.352.1635.3

Part No.  
 70.355.1635.0  
 70.355.1635.1  
 70.355.1635.2  
 70.355.1635.3

Part No.  
 70.356.1635.0  
 70.356.1635.1  
 70.356.1635.2  
 70.356.1635.3

Part No.  
 70.357.1635.0  
 70.357.1635.1  
 70.357.1635.2  
 70.357.1635.3



Part No.  
 70.333.1635.0  
 70.333.1635.1

Part No.  
 70.325.1628.0

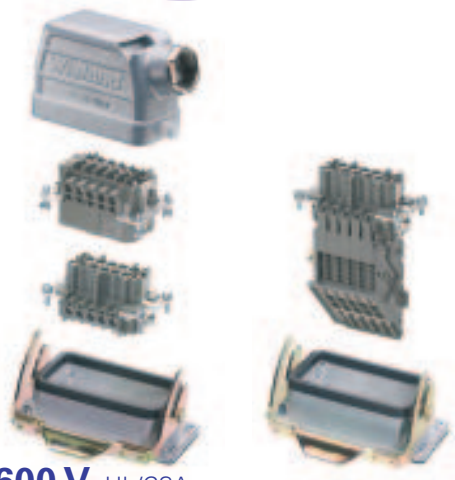
Part No.  
 70.340.1635.0  
 70.340.1635.1

Part No.  
 70.341.1635.0  
 70.341.1635.1

Part No.  
 70.342.1635.0  
 70.342.1635.1

Part No.  
 70.343.1635.0  
 70.343.1635.1

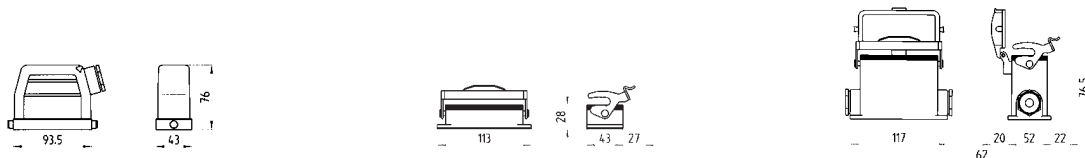
**revos** POWER



**690 V 400 V, 82 A** IEC 61 984

 <b>Screw connection</b>		Socket insert	6 – 16 mm <sup>2</sup> 10 – 4 AWG	   	10 mm	silver-plated	10
		Plug insert	6 – 16 mm <sup>2</sup> 10 – 4 AWG	   	10 mm	silver-plated	10
Number of poles	Thread	Cable gland type					Box Qty
Hoods Size <b>16</b> for multipole connectors <b>4 pole + earth</b>	M 32	0 with cable gland 1 with thread only 2 intermediate supports with thread 3 with strain relief					1
			Open housing	Closed housing with two cable glands on side	Closed housing with one cable gland on left side		
							
Number of poles	Thread	Cable gland type	Box Qty	Part No.	Part No.	Part No.	
Housings Size <b>16</b> for multipole connectors <b>4 pole + earth</b>	M 32	0 with cable gland 1 with thread only	1 1 1	71.320.1628.0	76.334.4035.0 76.334.4035.1	76.335.4035.0 76.335.4035.1	

# revos

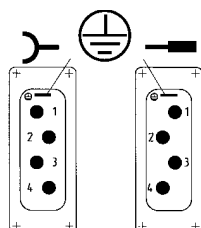


## 4 pole + earth

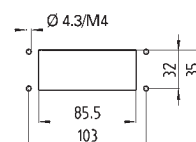
Pole assignment  
 Plug insert    Socket insert  
 4 pole + earth    4 pole + earth

Part No.  
 72.208.0453.0

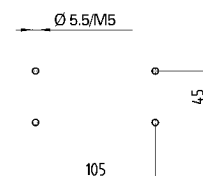
72.218.0453.0



Mounting distances and opening for open housings



Mounting distances for closed housings



Hood with cable gland



Hood with cable gland



Part No.  
 76.353.4035.0  
 76.353.4035.1  
 76.353.4035.2  
 76.353.4035.3

Part No.  
 76.352.4035.0  
 76.352.4035.1  
 76.352.4035.2  
 76.352.4035.3

Closed housing with cable gland underneath



Open housing with protective cover



Closed housing with two cable glands on side and protective cover



Closed housing with cable gland on left side and protective cover



Closed housing with cable gland on right side and protective cover



Closed housing with cable gland underneath and protective cover



Part No.  
 76.337.4035.0  
 76.337.4035.1

Part No.  
 71.325.1628.0

Part No.  
 76.344.4035.0  
 76.344.4035.1

Part No.  
 76.345.4035.0  
 76.345.4035.1

Part No.  
 76.346.4035.0  
 76.346.4035.1

Part No.  
 76.347.4035.0  
 76.347.4035.1

# Industrial multipole connectors, plug and socket inserts, terminal adaptors, hoods and housings with double locking levers 4-6 pole 690 V

## revos POWER



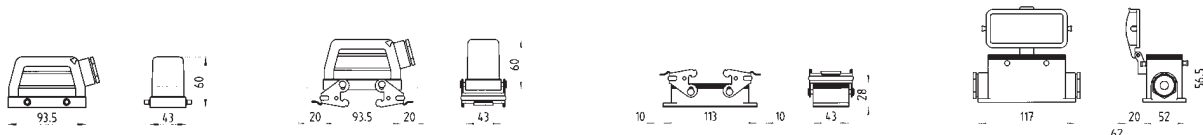
**600 V** UL/CSA

**690 V, 35/16 A** IEC 61 984

**IP 55 Protection, IP 65 Protection** with the suitable cable gland

		Cross-section	Approvals	Stripping length	Material	Box Qty
 <b>Screw connection</b>	Socket insert	2.5 – 6 mm <sup>2</sup>		10 mm	silver-plated	10
	4 pole silver-plated	14 – 8 AWG		7 mm	tin-plated	
 <b>Screw connection</b>	Plug insert	2.5 – 6 mm <sup>2</sup>		10 mm	silver-plated	10
	4 pole silver-plated	14 – 8 AWG		7 mm	tin-plated	
 <b>Screw connection</b> Terminal adaptor 500 V, 35/16 A	Socket insert, earth-right	2.5 – 6 mm <sup>2</sup>		12 mm	silver-plated	10
	4 pole silver-plated	14 – 8 AWG		12 mm	tin-plated	
	Plug insert, earth-right	2.5 – 6 mm <sup>2</sup>		12 mm	silver-plated	10
	4 pole silver-plated	14 – 8 AWG		12 mm	tin-plated	
		1.5 – 4 mm <sup>2</sup>				
		16 – 12 AWG				
Number of poles	Thread	Cable gland type		Box Qty		
Hoods	M 25	0 with cable gland		1		
Size <b>16</b> for multipole connectors		1 with thread only				
<b>4-6 pole + earth</b>		2 intermediate supports with thread				
		3 with strain relief				
		Open housing	Closed housing with two cable glands on side	Closed housing with one cable gland on left side		
						
Number of poles	Thread	Cable gland type	Box Qty	Part No.	Part No.	Part No.
Housings				72.320.1628.0 B 2.181,40		
Size <b>16</b> for multipole connectors	M 25	0 mit Verschraubung	1		72.330.1635.0	72.331.1635.0
<b>4-6 pole + earth</b>		1 mit Gewindebohrung	1		72.330.1635.1	72.331.1635.1

# revos



## 4-6 pole + earth

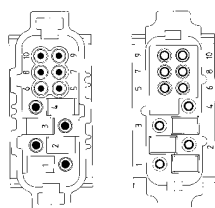
Part No.  
72.205.1053.0

72.215.1053.0

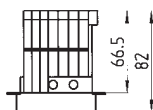
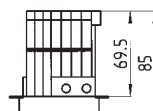
72.107.1053.0

72.117.1053.0

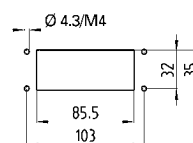
Pole assignment  
Plug insert      Socket insert  
4-6 pole + earth    4-6 pole + earth



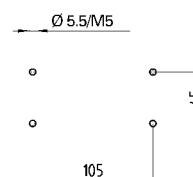
Dimensions of the terminal adaptors



Mounting distances and opening for open housings



Mounting distances for closed housings



Hood



Part No.  
72.350.1635.0  
72.350.1635.1  
72.350.1635.2  
72.350.1635.3

Hood



Part No.  
72.352.1635.0  
72.352.1635.1  
72.352.1635.2  
72.352.1635.3

Hood and locking levers



Part No.  
72.355.1635.0  
72.355.1635.1  
72.355.1635.2  
72.355.1635.3

Hood and locking levers



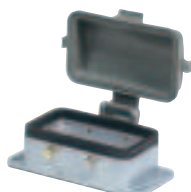
Part No.  
72.357.1635.0  
72.357.1635.1  
72.357.1635.2  
72.357.1635.3

Closed housing with cable gland from underneath



Part No.  
72.333.1635.0  
72.333.1635.1

Open housing with protective cover



Part No.  
72.325.1628.0

Closed housing with two cable glands on side and protective cover



Part No.  
72.340.1635.0  
72.340.1635.1

Closed housing with cable gland on left side and protective cover



Part No.  
72.341.1635.0  
72.341.1635.1

Closed housing with cable gland on right side and protective cover



Part No.  
72.342.1635.0  
72.342.1635.1

Closed housing with cable gland underneath and protective cover



Part No.  
72.343.1635.0  
72.343.1635.1



# Industrial multipole connectors, plug and socket inserts, terminal adaptors, hoods and housings with single locking lever 4-6 pole 690 V

## revos POWER



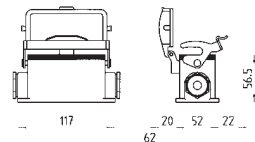
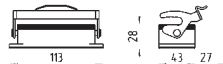
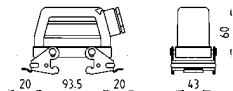
**600 V** UL/CSA

**690 V, 35/16 A** IEC 61 984

**IP 55 Protection, IP 65 Protection** with the suitable cable gland

		Cross-section	Approvals	Stripping length	Material	Box Qty
 Screw connection	Socket insert	2.5 – 6 mm <sup>2</sup>		10 mm	silver-plated	10
	4 pole silver-plated	14 – 8 AWG		7 mm	tin-plated	
 Screw connection	Plug insert	2.5 – 6 mm <sup>2</sup>		10 mm	silver-plated	10
	4 pole silver-plated	14 – 8 AWG		7 mm	tin-plated	
 Screw connection Terminal adaptor 500 V, 35/16 A	Socket insert, earth-right	2.5 – 6 mm <sup>2</sup>		12 mm	silver-plated	10
	4 pole silver-plated	14 – 8 AWG		12 mm	tin-plated	
	Plug insert, earth-right	2.5 – 6 mm <sup>2</sup>		12 mm	silver-plated	10
	4 pole silver-plated	14 – 8 AWG		12 mm	tin-plated	
		1.5 – 4 mm <sup>2</sup>				
		16 – 12 AWG				
Number of poles	Thread	Cable gland type		Box Qty		
Hoods	M 25	0 with cable gland		1		
Size <b>16</b> for multipole connectors		1 with thread only				
<b>4-6 pole + earth</b>		2 intermediate supports with thread				
		3 with strain relief				
		Open housing	Closed housing with two cable glands on side	Closed housing with one cable gland on left side		
						
Number of poles	Thread	Cable gland type	Box Qty	Part No.	Part No.	Part No.
Housings				77.320.1628.0		
Size <b>16</b> for multipole connectors	M 25	0 with cable gland	1		77.330.1635.0	77.331.1635.0
<b>4-6 pole + earth</b>		1 with thread only	1		77.330.1635.1	77.331.1635.1

# revos



## 4-6 pole + earth

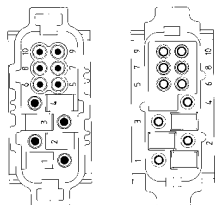
Part No.  
72.205.1053.0

72.215.1053.0

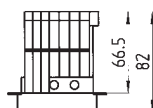
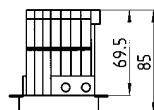
72.107.1053.0

72.117.1053.0

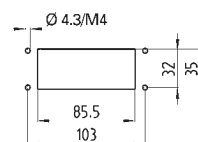
Pole assignment  
Plug insert      Socket insert  
4-6 pole + earth    4-6 pole + earth



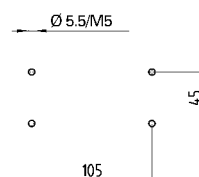
Dimensions of the terminal adaptors



Mounting distances and opening for open housings



Mounting distances for closed housings



Hood



Hood



Part No.  
77.350.1635.0  
77.350.1635.1  
77.350.1635.2  
77.350.1635.3

Part No.  
77.352.1635.0  
77.352.1635.1  
77.352.1635.2  
77.352.1635.3

Closed housing with cable gland from underneath

Open housing with protective cover

Closed housing with two cable glands on side and protective cover

Closed housing with cable gland on left side and protective cover

Closed housing with cable gland on right side and protective cover

Closed housing with cable gland underneath and protective cover



Part No.  
77.333.1635.0  
77.333.1635.1

Part No.  
77.325.1628.0

Part No.  
77.340.1635.0  
77.340.1635.1

Part No.  
77.341.1635.0  
77.341.1635.1

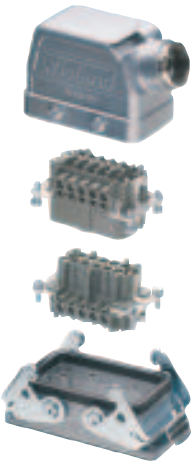
Part No.  
77.342.1635.0  
77.342.1635.1

Part No.  
77.343.1635.0  
77.343.1635.1

Industrial multipole connectors, plug and socket inserts,  
hoods and housings 6-6 pole 690/400 V and 400/230 V

revos


POWER



Multipole connectors 40/16 A, with mixed contacts

**600 V** UL/CSA  
**690/400 V, 40 A** IEC 61 984  
**400/230 V, 16 A** IEC 61 984

IP 55 Protection, IP 65 Protection with the suitable cable gland

<div><div>Screw connection</div></div>	Socket insert		Rated current		Cross-section	Approvals	Stripping length	Material	Box Qty
	6 pole	40 A	10 mm <sup>2</sup>	12 – 6 AWG	10 mm		10 mm	silver-plated	10
	6 pole	16 A	2.5 mm <sup>2</sup>	16 – 12 AWG				tin-plated	
	Plug insert				10 mm		10 mm	silver-plated	10
	6 pole	40 A	10 mm <sup>2</sup>	12 – 6 AWG				7 mm	
6 pole	16 A	2.5 mm <sup>2</sup>	16 – 12 AWG		7 mm		7 mm	tin-plated	
<div><div>Hood with cable gland</div></div>									
Number of poles	Thread	Cable gland type				Box Qty			
Hood Size <b>16</b> for multipole connectors <b>6-6 pole + earth</b>	M 40	2 intermediate supports with thread				1			
<div><div>Open housing</div></div>									
Number of poles						Box Qty			
Housing Size <b>16</b> for multipole connectors <b>6-6 pole + earth</b>						1			

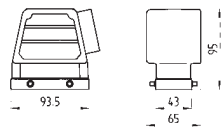
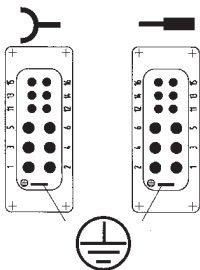
# revos

6-6 pole + earth

Part No.  
72.205.1253.0

72.215.1253.0

Pole assignment  
Plug insert      Socket insert  
6-6 pole + earth    6-6 pole + earth

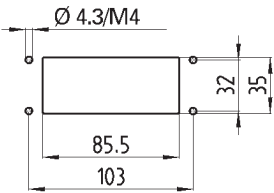


Part No.  
72.250.1635.2



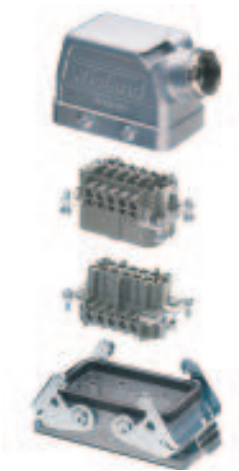
Part No.  
72.320.1628.0

Mounting distances and opening  
for open housing



# Industrial multipole connectors, plug and socket inserts, hoods and housings 3-3-6 pole 690/400 V

## revos POWER



Multipole connectors 100/40/16 A,  
with mixed contacts  
**600 V** UL/CSA  
**690/400 V**,  
100 A IEC 61984  
40 A IEC 61984  
16 A IEC 61984

IP 55 Protection, IP 65 Protection with the suitable cable gland

 Screw connection	Socket insert		Rated current		Cross-section	Approvals	Stripping length	Material	Box Qty
	3 pole	100 A	10 – 25 mm <sup>2</sup>	8 – 2 AWG			14 mm	silver-plated	10
	3 pole	40 A	4 – 10 mm <sup>2</sup>	12 – 6 AWG			10 mm	silver-plated	
	6 pole	16 A	1 – 2.5 mm <sup>2</sup>	16 – 12 AWG			7 mm	tin-plated	
	Plug insert						14 mm	silver-plated	10
	3 pole	100 A	10 – 25 mm <sup>2</sup>	8 – 2 AWG			10 mm	silver-plated	
	3 pole	40 A	4 – 10 mm <sup>2</sup>	12 – 6 AWG			7 mm	tin-plated	
6 pole	16 A	1 – 2.5 mm <sup>2</sup>	16 – 12 AWG						
 Hood with cable gland									
Number of poles	Thread	Cable gland type				Box Qty			
Hood Size <b>24</b> for multipole connectors <b>3-3-6 pole + earth</b>	M 50	2 intermediate supports with thread				1			
 Open housing									
Number of poles						Box Qty			
Housing Size <b>24</b> for multipole connectors <b>3-3-6 pole + earth</b>						1			



# revos

## 3-3-6 pole + earth

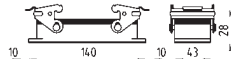
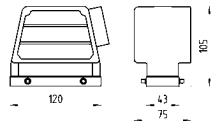
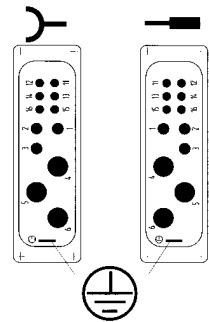
Part No.  
72.203.1253.0

72.213.1253.0

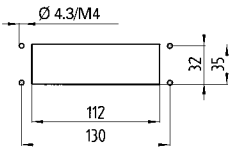
Part No.  
72.250.2435.2

Part No.  
72.320.2428.0

Pole assignment  
Plug insert    Socket insert  
3-3-6 pole + earth    3-3-6 pole + earth



Mounting distances and opening  
for open housing





# Industrial multipole connectors, plug and socket inserts, hoods and housings with single locking lever 4-2 pole 690 V and 400 V

## revos POWER

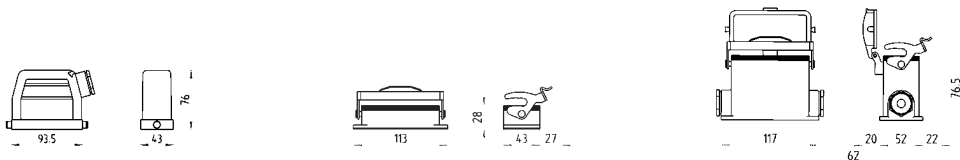


Multipole connectors 82/16 A,  
with mixed contacts  
**600 V** UL/CSA  
**690 V, 82 A** IEC 61 984  
**400 V, 16 A** IEC 61 984

IP 55 Protection, IP 65 Protection with the suitable cable gland

		Rated current	Cross-section	Approvals	Stripping length	Material	Box Qty
 <p><b>Screw connection</b></p>	Socket insert						10
	4 pole	82 A	6 – 16 mm <sup>2</sup> 10 – 4 AWG		15 mm	silver-plated	
	2 pole	16 A	1 – 2.5 mm <sup>2</sup> 16 – 12 AWG		9 mm	tin-plated	
	Plug insert						10
	4 pole	82 A	6 – 16 mm <sup>2</sup> 10 – 4 AWG		15 mm	silver-plated	
	2 pole	16 A	1 – 2.5 mm <sup>2</sup> 16 – 12 AWG		9 mm	tin-plated	
Number of poles	Thread	Cable gland type		Box Qty			
Hood	M 32	0 with cable gland 1 with thread only 2 intermediate supports with thread 3 with strain relief		1			
Size <b>16</b> for multipole connectors <b>4-2 pole + earth</b>							
				Open housing	Closed housing with two cable glands on side	Closed housing with one cable gland on left side	
							
Number of poles	Thread	Cable gland type	Box Qty	Part No.	Part No.	Part No.	
Housing				71.320.1628.0			
Size <b>16</b> for multipole connectors	M 32	0 with cable gland	1		76.334.4035.0	76.335.4035.0	
<b>4-2 pole + earth</b>		1 with thread only	1		76.334.4035.1	76.335.4035.1	

# revos

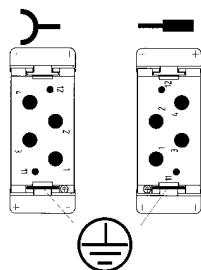


## 4-2 pole + earth

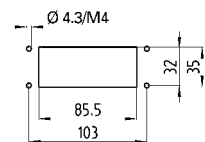
Part No.  
72.205.0653.0

72.215.0653.0

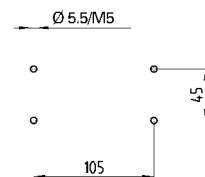
Pole assignment  
Plug insert      Socket insert  
4-2 pole + earth      4-2 pole + earth



Mounting distances and opening for open housings



Mounting distances for closed housings



Hood with cable gland



Hood with cable gland



Part No.  
76.353.4035.0  
76.353.4035.1  
76.353.4035.2  
76.353.4035.3

Part No.  
76.354.4035.0  
76.354.4035.1  
76.354.4035.2  
76.354.4035.3

Closed housing with cable entry from underneath



Open housing with protective cover



Closed housing with two cable glands on side and protective cover



Closed housing with cable gland on left side and protective cover



Closed housing with cable gland on right side and protective cover



Closed housing with cable gland underneath and protective cover



Part No.  
76.337.4035.0  
76.337.4035.1

Part No.  
71.325.1628.0

Part No.  
76.344.4035.0  
76.344.4035.1

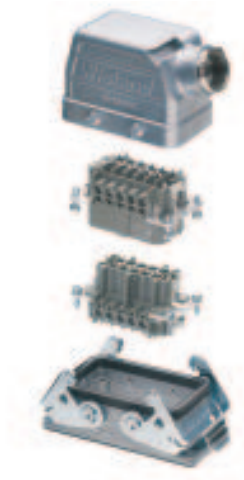
Part No.  
76.345.4035.0  
76.345.4035.1

Part No.  
76.346.4035.0  
76.346.4035.1

Part No.  
76.347.4035.0  
76.347.4035.1




# Industrial multipole connectors, plug and socket inserts, hoods and housings with double locking lever 4-2 pole 690 V and 400 V

## revos POWER



Multipole connectors 82/16 A,  
with mixed contacts  
**600 V** UL/CSA  
**690 V**, 82 A IEC 61 984  
**400 V**, 16 A IEC 61 984

IP 55 Protection, IP 65 Protection with the suitable cable gland

 <b>Screw connection</b>		Socket insert			Stripping length		Material	Box Qty
		4 pole	82 A 6 – 16 mm <sup>2</sup> 10 – 4 AWG		15 mm	silver-plated		
		2 pole	16 A 1 – 2.5 mm <sup>2</sup> 16 – 12 AWG	9 mm	tin-plated			
		Plug insert			Stripping length		Material	Box Qty
4 pole	82 A 6 – 16 mm <sup>2</sup> 10 – 4 AWG	15mm	silver-plated					
2 pole	16 A 1 – 2.5 mm <sup>2</sup> 16 – 12 AWG	9 mm	tin-plated					

# revos

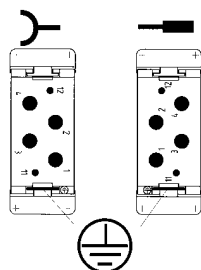


## 4-2 pole + earth

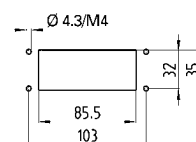
Part No.  
72.205.0653.0

72.215.0653.0

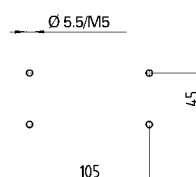
Pole assignment  
Plug insert      Socket insert  
4-2 pole + earth    4-2 pole + earth



Mounting distances and opening for open housings



Mounting distances for closed housings



Hood with cable gland



Part No.  
73.353.4035.0  
73.353.4035.1  
73.353.4035.2  
73.353.4035.3

Hood with cable gland



Part No.  
73.352.4035.0  
73.352.4035.1  
73.352.4035.2  
73.352.4035.3

Hood with cable gland and locking levers



Part No.  
73.358.4035.0  
73.358.4035.1  
73.358.4035.2  
73.358.4035.3

Hood with cable gland and locking levers



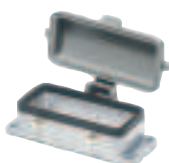
Part No.  
73.357.4035.0  
73.357.4035.1  
73.357.4035.2  
73.357.4035.3

Closed housing with cable entry from underneath



Part No.  
73.337.4035.0  
73.337.4035.1

Open housing with protective cover



Part No.  
70.325.1628.0

Closed housing with two cable glands on side and protective cover



Part No.  
73.344.4035.0  
73.344.4035.1

Closed housing with cable gland on left side and protective cover



Part No.  
73.345.4035.0  
73.345.4035.1

Closed housing with cable gland on right side and protective cover



Part No.  
73.346.4035.0  
73.346.4035.1

Closed housing with cable gland underneath and protective cover



Part No.  
73.347.4035.0  
73.347.4035.1